

Rate of Introduction

Use the information below to graph the rate of successful colonization by plant, insect, and bird species in the Hawaiian Islands. Using the graph on the next page, plot time on the X axis and introductions on the Y axis. To do so, you must first determine how many species were introduced per year for each of the time segments.

Use this worksheet to determine the rate.

During the prehistoric period, an average of one plant, bird, or insect species successfully colonized the islands every few thousand years. 1 species / 3000 years.

Between 30 Ma and 1000 AD _____ species were introduced per year.

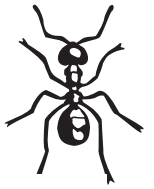
During 1000-1778 AD, the first people of Hawai'i introduced around 30 plants, three mammals, one bird, two reptiles. 36 species/778 years.

From 1000-1778 AD _____ species were introduced per year.

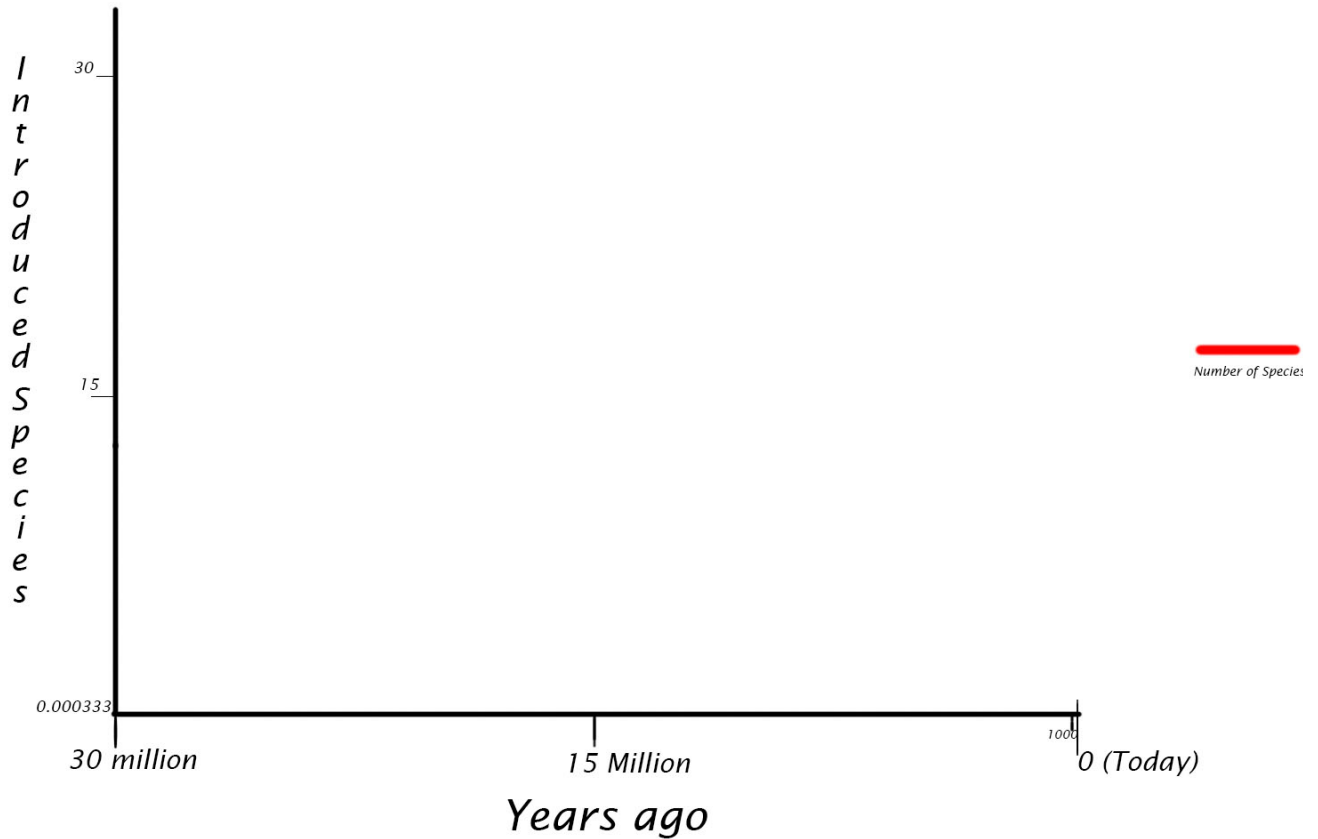
From 1778 to 1840 around one hundred plants were introduced, in addition to numerous animals, insects, and birds. ~100 species/60 years.

From 1778-1840 AD _____ species were introduced per year.

Today _____ species are introduced per year.



Rate of Species Introduction in Hawai'i



Extra Credit

Graph the changes in the human population of Hawai'i.

Prior to 1000 AD, the population was _____.

In 1778 AD, the estimated population was _____.

In 1886 AD, the estimated population was _____.

Today, the population is _____.